

Terminal Box Features

High impact enclosures for tough environments



Weather & UV Resistant
(25 Year outdoor life)

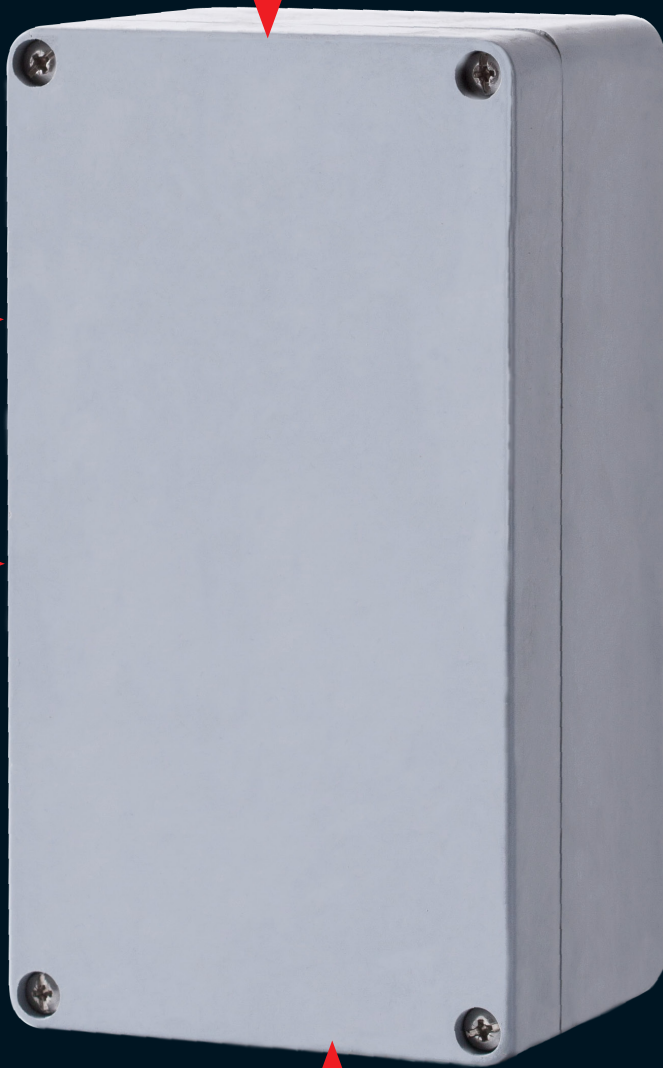


Halogen free

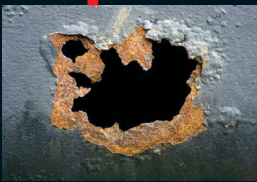
Halogen Free




Flame Retardant



17 Different sizes



Durable GRP Material

 **Versions Available**



Terminal Boxes

High impact enclosures for tough environments



Material	DMC (Dough Moulding Compound)
Operating Temperature	-50° C to + 200° C
Glow Wire Capability / Flammability	960° / UL94 V0
Expected UV Life (Direct Exposure)	25 years +
IP Level	IP68
IK Level	IK9
Security Level	Security Level 1 for Round Enclosure and Security Level 2 for Square/Rectangle Enclosure



- Enclosures
- Hinges
- Locks
- Handles
- Accessories
- Rotary Operating Handles
- Insulators
- Transformer Equipment
- Index

Enclosures

UB40 & UB41 Enclosure



Hinges

Locks

Handles

External Dimensions (mm)			Internal Dimensions (mm)			Part Number	Description	IP Level	Qty per box
H	W	D	H	W	D				
115	115	83	90	90	70	040-702	UB40 (20mm)	68	20
140	140	90	124	124	78	040-793	UB41 (25mm)	68	20
115	115	83	90	90	70	040-702/TERM	UB40 (20mm) with terminals	68	20
140	140	90	124	124	78	040-793/TERM	U41 (25mm) with terminals	68	20

Accessories

Rotary Operating Handles

Insulators

Transformer Equipment

Index

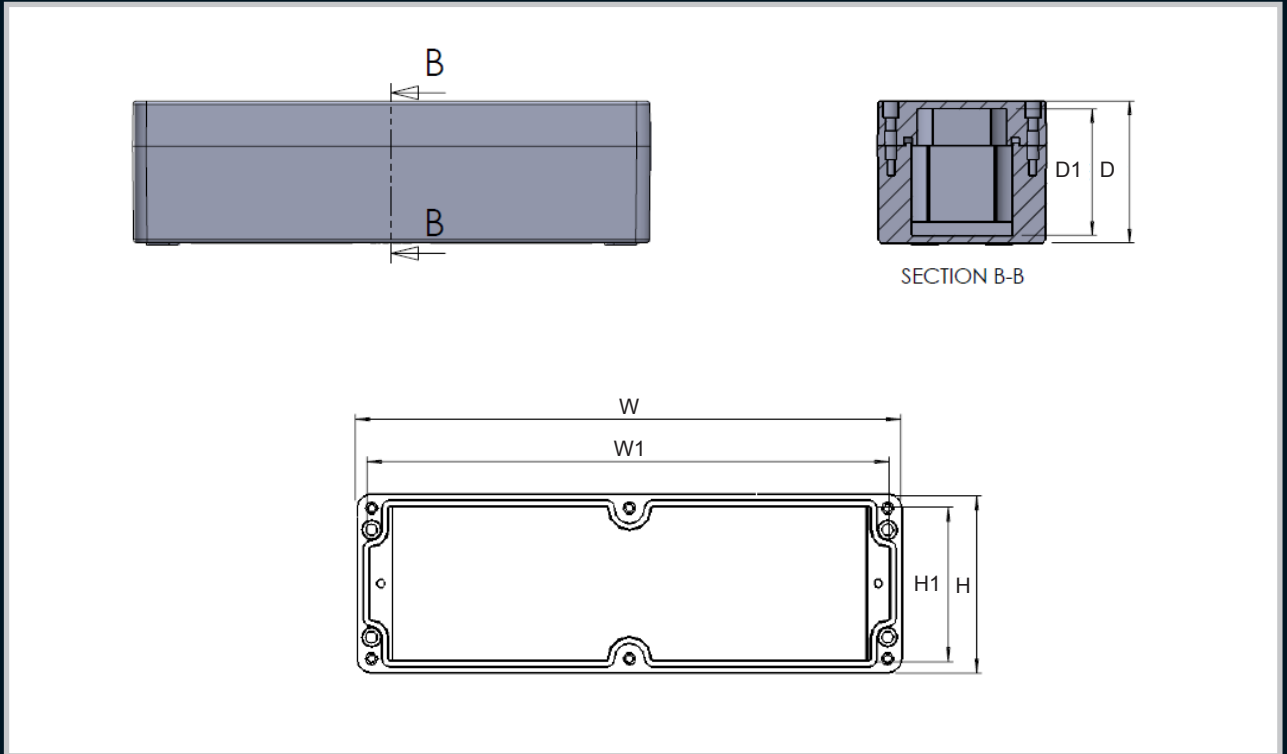
UB40 Bottom Entry Enclosure



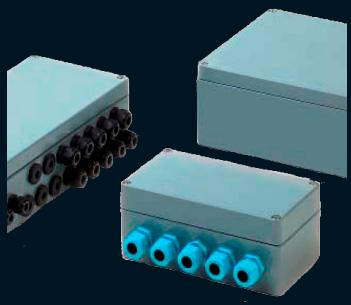
External Dimensions (mm)			Internal Dimensions (mm)			Part Number	Description	IP Level	Qty per box
H	W	D	H	W	D				
108	140	110	65	90	90	040-702/BE	UB40 Bottom Entry (20mm)	68	20
108	140	110	65	90	90	040-702/BE/TERM	Junction Box UB40/A1/20 (Bottom Entry) complete with Terminals	68	20

BENEFITS & FEATURES

- For general industrial and mining electrical installations.
- No exposed metal parts.
- Dust and waterproof IP68.
- No drilling or tapping of cable entries required.
- Internal earthing to all entries and rail provided.



External Dimensions (mm)			Internal Dimensions (mm)			Part Number		IP Level	Qty per box
H	W	D	H1	W1	D1	Black (Eex)	Grey		
75	80	61	65	70	56	0808KE/I	0808POK/I	68	10
75	110	64	65	100	54	0811KE/I	0811POK/I	68	10
75	160	61	65	150	54	0816KE/I	0816POK/I	68	10
75	190	61	65	180	54	0819KE/I	0819POK/I	68	10
75	230	63	65	220	54	0823KE/I	0823POK/I	68	10
120	125	90	110	115	80	1212KE/I	1212POK/I	68	10
120	220	95	110	210	85	1222KE/I	1222POK/I	68	10
160	160	95	147	147	86	1616KE/I	1616POK/I	68	10
160	260	95	146	246	86	1626KE/I	1626POK/I	68	10
160	360	95	146	346	86	1636KE/I	1636POK/I	68	10
160	560	95	146	550	86	1656KE/I	1656POK/I	68	10
250	255	128	237	242	113	2526KE/I	2526POK/I	68	10
250	400	128	237	387	113	2540KE/I	2540POK/I	68	10
250	600	128	237	587	121	2560KE/I	2560POK/I	68	10
410	400	128	387	397	113	4140KE/I	4140POK/I	68	10
250	255	163	237	242	149	2526KE/DI	2526POK/DI	68	10
250	400	163	237	387	149	2540KE/DI	2540POK/DI	68	10



* Versions Available

Enclosures
Hinges
Locks
Handles
Accessories
Rotary Operating Handles
Insulators
Transformer Equipment
Index