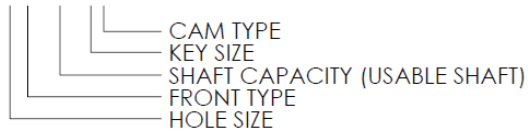


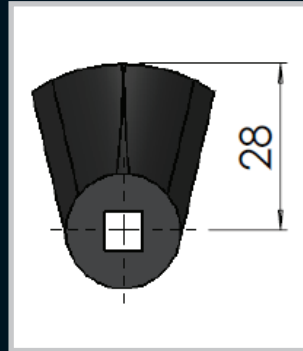
LOCKS CODING SYSTEM

CODE NUMBER

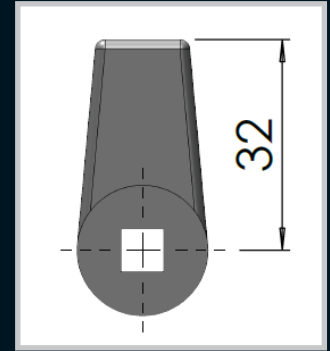
16.1.431.01



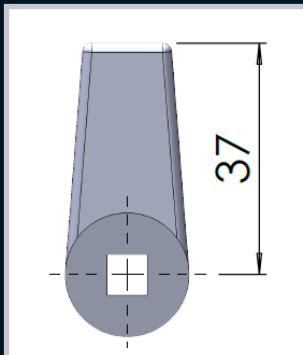
Cams to fit 16 series locks



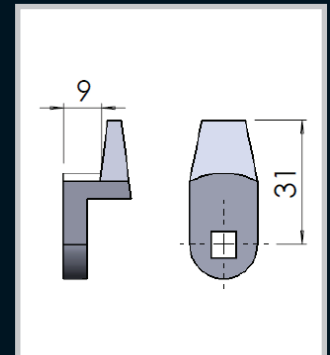
Part Number	Material and Finish	Description
CAM01N	Nylon black	Cam to suit series 16



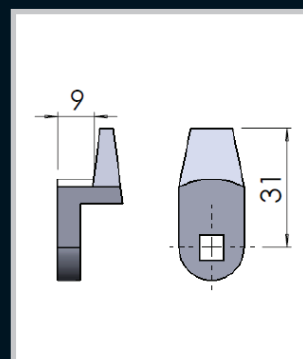
Part Number	Material and Finish	Description
CAM02N	Nylon black	Tapered cam to suit series 16



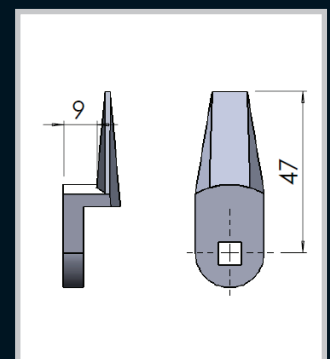
Part Number	Material and Finish	Description
CAM03Z	ZDC Galvanized	Tapered cam to suit series 16



Part Number	Material and Finish	Description
CAM04N	Nylon black	Cam with a 9mm step to suit series 16



Part Number	Material and Finish	Description
CAM04Z	ZDC matt silver	Cam with a 9mm step cam to suit series 16



Part Number	Material and Finish	Description
CAM05N	Nylon black	Cam with a 9mm step to suit series 16

Enclosures

Hinges

Locks

Handles

Accessories

Rotary Operating Handles

Insulators

Transformer Equipment

Index

Enclosures

Hinges

Locks

Handles

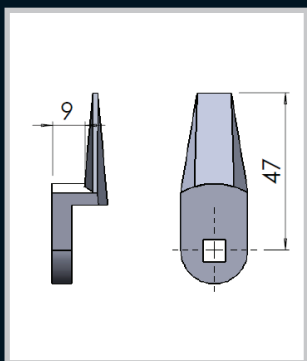
Accessories

Rotary Operating
Handles

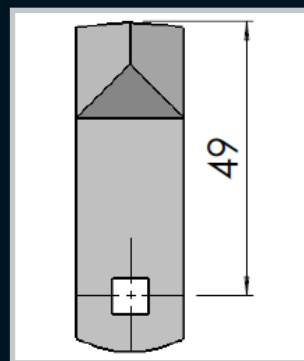
Insulators

Transformer
Equipment

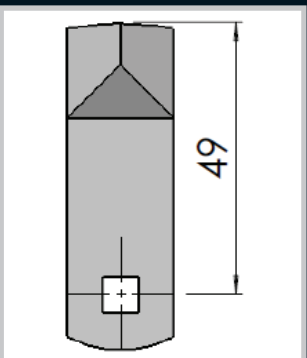
Index



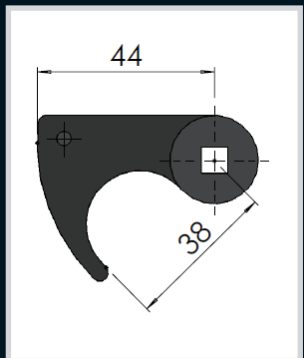
Part Number	Material and Finish	Description
CAM05Z	ZDC Galvanized	Cam with a 9mm step to suit series 16



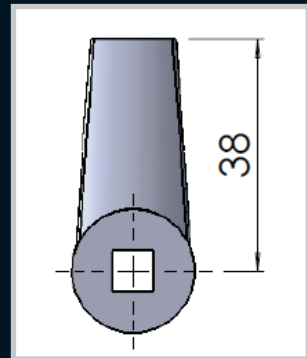
Part Number	Material and Finish	Description
CAM06M/S	Mild steel natural finish	Cam to suit handle 1011108



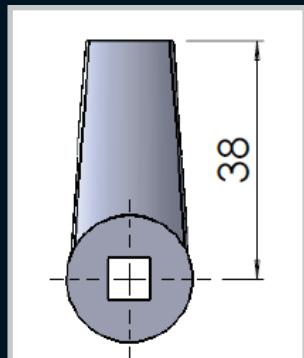
Part Number	Material and Finish	Description
CAM06S/S	Stainless steel natural finish	Cam to suit handle 1011108



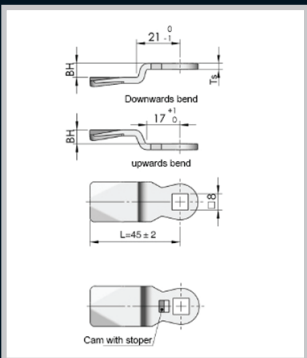
Part Number	Material and Finish	Description
CAM07N	Nylon black	Hooked cam to suit 16 series



Part Number	Material and Finish	Description
CAM09N	Nylon black	Cam to suit 16 series



Part Number	Material and Finish	Description
CAM09Z	ZDC Galvanized	Cam to suit 16 series

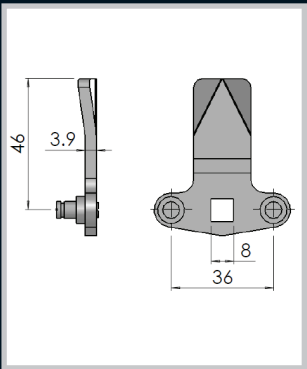


Part Number	Material and Finish	Description
CAM08/4	Mild steel	4mm bend
CAM08/12	Mild steel	12mm bend

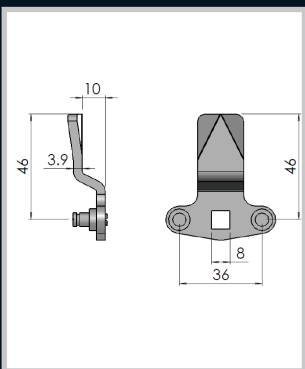
Remarks:

All other BH dimensions available on request.

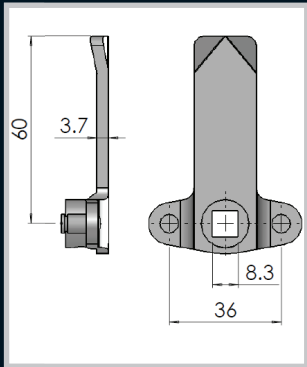
3 Point locking cams
(For use with locking rods on page 170 - 171)



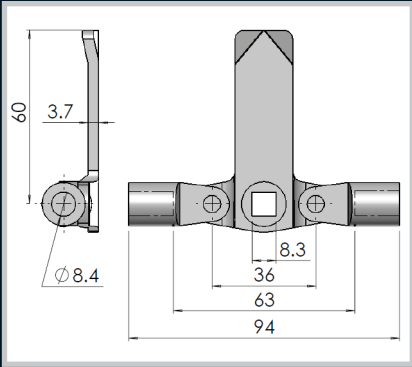
Part Number	Material and Finish	Description
CAM08M/S8PSTR	Mild steel natural finish	3 point cam
CAM08S/S8PSTR	Stainless steel natural finish	3 point cam



Part Number	Material and Finish	Description
CAM08M/S8STEP	Mild steel natural finish	3 point cam
CAM08S/S8STEP	Stainless steel natural finish	3 point cam
CAM08/4.3	Mild steel with a 4mm bend	3 point cam
CAM08/12.3	Mild steel with a 12mm bend	3 point cam



Part number	Material and Finish	Description
CAM08M/SPINS	Mild steel natural finish	3 point cam



Part Number	Material and Finish	Description
CAM08M/S8COMP	Mild steel natural finish	3 point cam with Rod adaptors
CAM08S/S8COMP	Full stainless steel natural finish	3 point cam with Rod adaptors

Enclosures

Hinges

Locks

Handles

Accessories

Rotary Operating
Handles

Insulators

Transformer
Equipment

Index