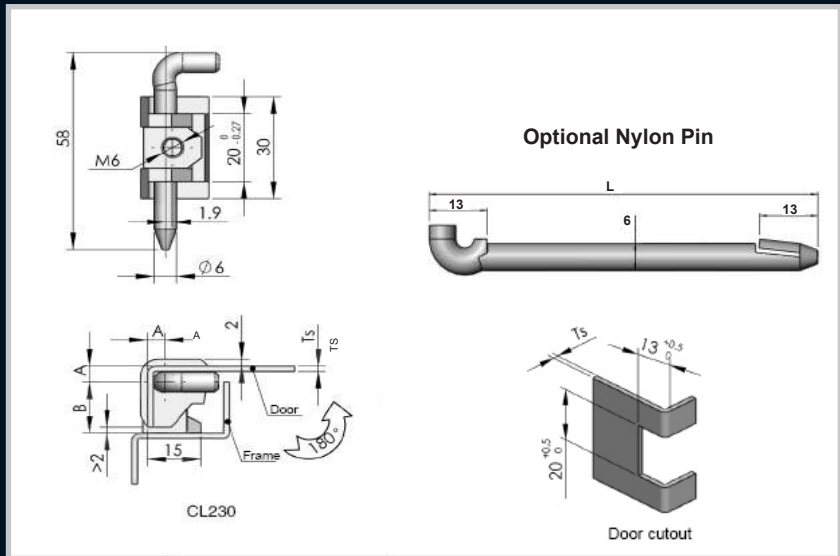




Optional Nylon Pin

Part Number	L (mm)
NP57	57
NP78	78

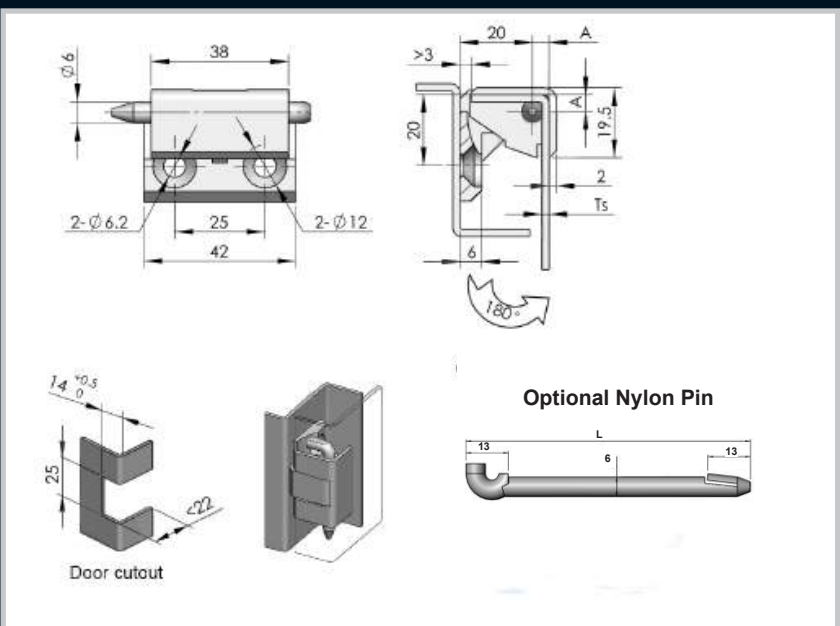


Part Number	Description	TS	A	B
302058B-15	Semi concealed hinge ZDC black powder coated with steel pin	1.5	4.6	15
302058B-15.2	Semi concealed hinge ZDC black powder coated with steel pin	2	5.1	15
302058B-17	Semi concealed hinge ZDC black powder coated with steel pin	1.5	4.6	17
302058B-17.2	Semi concealed hinge ZDC black powder coated with steel pin	2	5.1	17
302058B-19	Semi concealed hinge ZDC black powder coated with steel pin	1.5	4.6	19
302058B-19.2	Semi concealed hinge ZDC black powder coated with steel pin	2	5.1	19



Optional Nylon Pin

Part Number	L (mm)
NP57	57
NP78	78



Part Number	Description	A
423825B.2	Black powder coated, Ts=2	5.1
423825B.3	Black powder coated, Ts=3	6.1
423825B.1	Black powder coated, Ts=1	4.6

Enclosures

Hinges

Locks

Handles

Accessories

Rotary Operating Handles

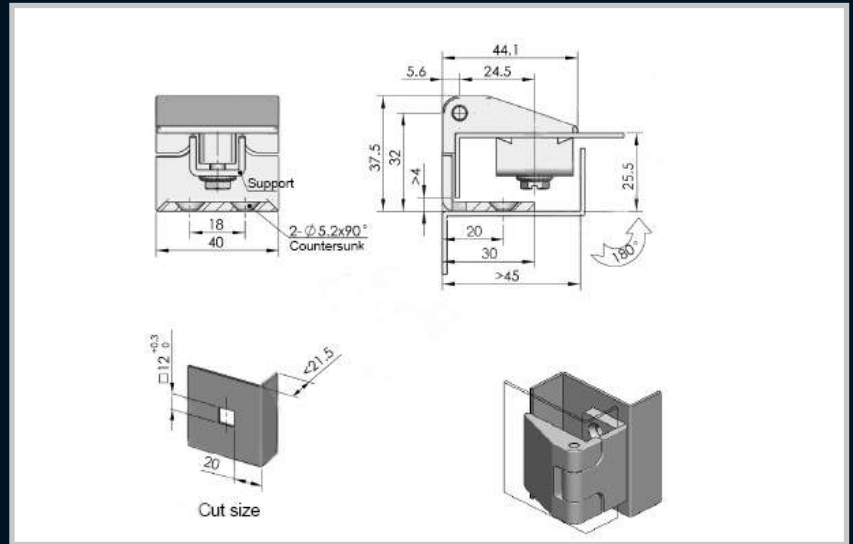
Insulators

Transformer Equipment

Index

Enclosures

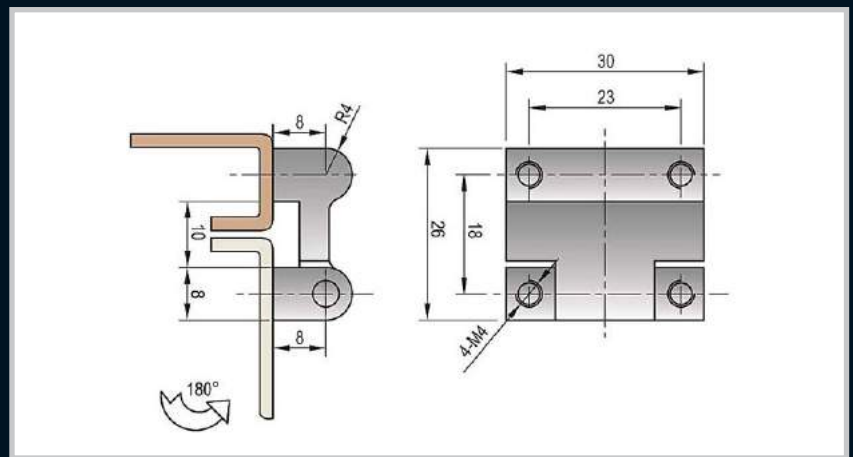
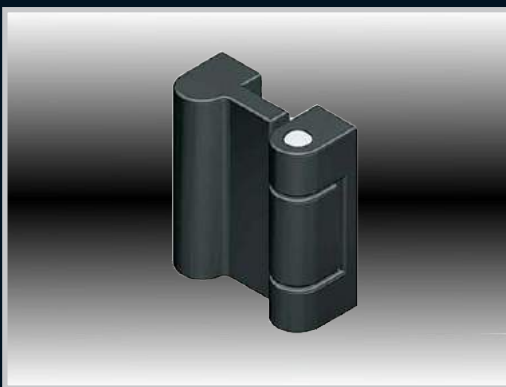
Hinges



Locks

Part Number	Description
40110	Black powder coated

Handles

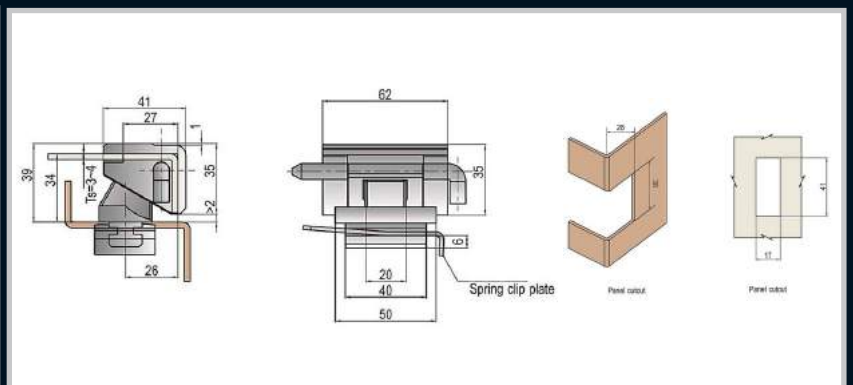
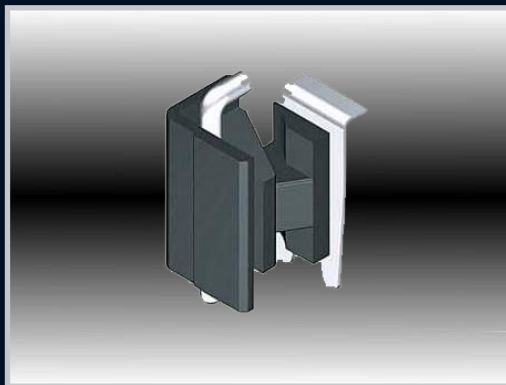


Accessories

Rotary Operating Handles

Part Number	Description
3010	Black powder coated

Insulators



Transformer Equipment

Part Number	Description
410110/B	Black powder coated with a spring clip plate

Index