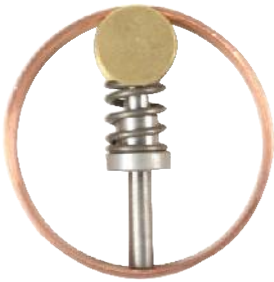


Rotary Tap Switches

Contact Arrangement Types

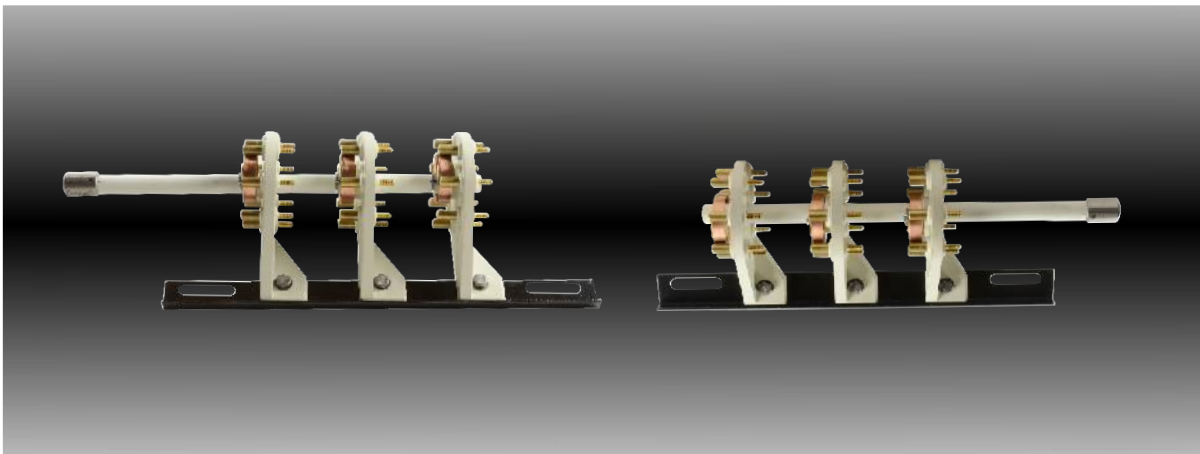
All Rotary Tap - Switches are available with two types of moving contacts as indicated below:



Standard Contact Arrangement

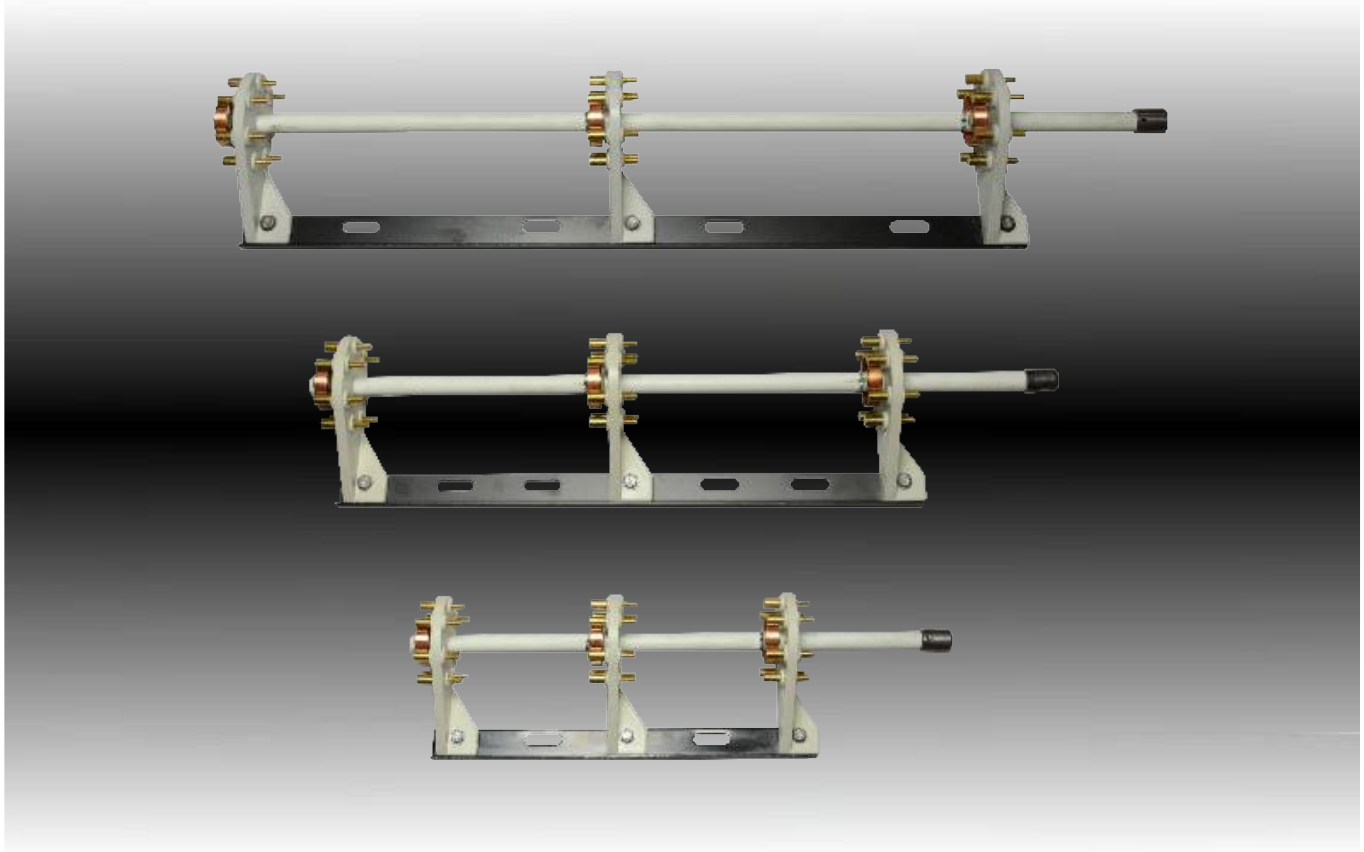


Butterfly Contact Arrangement



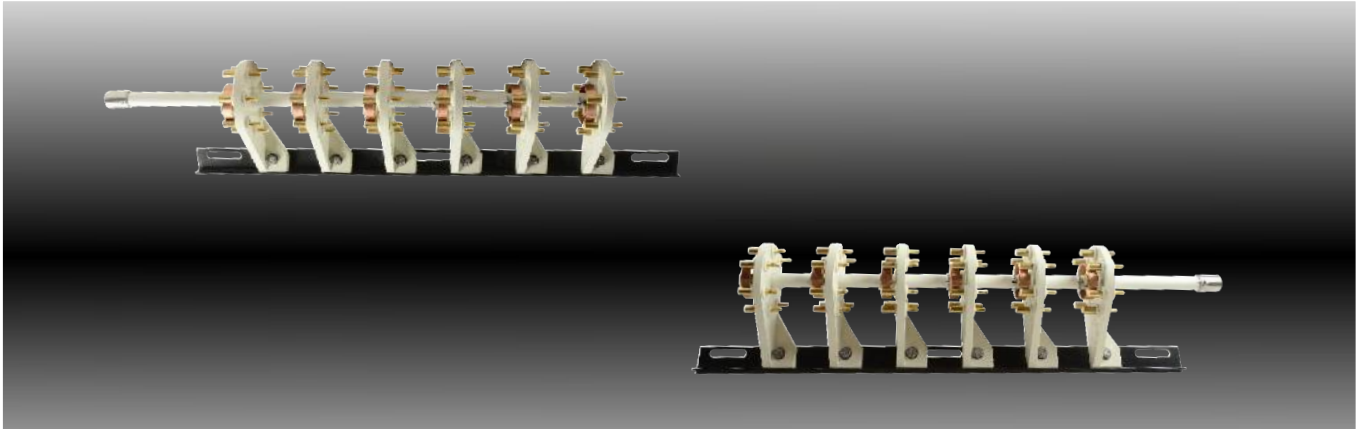
PART NUMBER	DESCRIPTION	Kv	CURRENT	PHASE	TYPE	BRACKET	CONTACT
040-522	RTS 22 Kv 100A 1Ph - Type A	22	100	1	A	Steel	Std
040-523	RTS 22 Kv 100A 1Ph - Type B	22	100	1	B	Steel	Std
040-508 BC	RTS 22Kv 100A 3Ph - Type A / 90° / BC	22	100	3	A	Steel	Butterfly
040-505	RTS 22Kv 100A 3Ph - Type A / MB	22	100	3	A	Moulded	Std
040-528	RTS 22Kv 100A 3Ph - Type A	22	100	3	A	Steel	Std
040-530	RTS 22Kv 100A 3Ph - Type AB	22	100	3	AB	Steel	Std
040-530 BC	RTS 22Kv 100A 3Ph - Type AB / BC	22	100	3	AB	Steel	Butterfly
040-506 BC	RTS 22Kv 100A 3Ph - Type B / 90° / BC	22	100	3	B	Steel	Butterfly
040-501	RTS 22Kv 100A 3Ph - Type B / MB	22	100	3	B	Moulded	Std
040-527	RTS 22Kv 100A 3Ph - Type B	22	100	3	B	Steel	Std

RTS = Rotary Tap Switch
LTS = Linear Tap Switch
MB = Moulded Bracket
BC = Butterfly Contact
A = LEFT HAND
B = RIGHT HAND

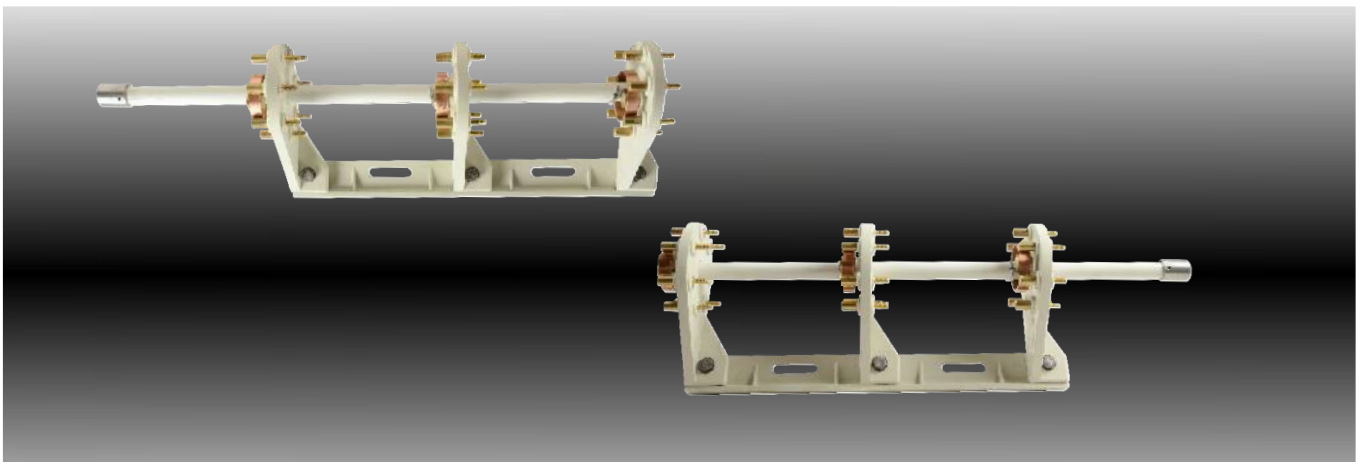


PART NUMBER	DESCRIPTION	Kv	CURRENT	PHASE	TYPE	BRACKET	CONTACT
040-534	RTS 22Kv 100A 3Ph (180 CNT) Type AB	22	100	3	AB	Steel	Std
040-533	RTS 22Kv 100A 3Ph (270 CNT) Type AB	22	100	3	AB	Steel	Std
040-532	RTS 22Kv 100A 3Ph (360 CNT) Type AB	22	100	3	AB	Steel	Std
040-521	RTS 22Kv 100A 3Ph (180 CNT) Type A	22	100	3	A	Steel	Std
040-518	RTS 22Kv 100A 3Ph (180 CNT) Type B	22	100	3	B	Steel	Std
040-520	RTS 22Kv 100A 3Ph (270 CNT) Type A	22	100	3	A	Steel	Std
040-517	RTS 22Kv 100A 3Ph (270 CNT) Type B	22	100	3	B	Steel	Std
040-519	RTS 22Kv 100A 3Ph (360 CNT) Type A	22	100	3	A	Steel	Std
040-516	RTS 22Kv 100A 3Ph (360 CNT) Type B	22	100	3	B	Steel	Std

RTS = Rotary Tap Switch
LTS = Linear Tap Switch
MB = Moulded Bracket
BC = Butterfly Contact
A = LEFT HAND
B = RIGHT HAND



PART NUMBER	DESCRIPTION	Kv	CURRENT	PHASE	TYPE	BRACKET	CONTACT
040-513	RTS 22Kv 100A 6Ph - Type A	22	100	6	A	Steel	Std
040-531	RTS 22Kv 100A 6Ph - Type AB	22	100	6	AB	Steel	Std
040-502	RTS 22Kv 100A 6Ph - Type B	22	100	6	B	Steel	Std
040-509 BC	RTS 22Kv 150A 3Ph - Type A / 90° / BC	22	150	3	A	Steel	Butterfly
040-510 BC	RTS 22Kv 150A 3Ph - Type A / BC	22	150	3	A	Steel	Butterfly
040-511 BC	RTS 22Kv 150A 3Ph - Type B / 90° / BC	22	150	3	B	Steel	Butterfly
040-507 BC	RTS 22Kv 150A 3Ph - Type B / BC	22	150	3	B	Steel	Butterfly



PART NUMBER	DESCRIPTION	Kv	CURRENT	PHASE	TYPE	BRACKET	CONTACT
040-514 BC	RTS 22Kv 300A 3Ph - Type A / BC	22	300	3	A	Steel	Butterfly
040-538 BC	RTS 22Kv 300A 3Ph - Type AB / BC	22	300	3	AB	Steel	Butterfly
040-503 BC	RTS 22Kv 300A 3Ph - Type B / BC	22	300	3	B	Steel	Butterfly
040-512	RTS 33Kv 100A 3Ph - Type A / MB	33	100	3	A	Moulded	Std
040-529 BC	RTS 33Kv 100A 3Ph - Type AB / BC	33	100	3	AB	Moulded	Butterfly
040-529	RTS 33Kv 100A 3Ph - Type AB / MB	33	100	3	AB	Moulded	Std
040-500	RTS 33Kv 100A 3Ph - Type B / MB	33	100	3	B	Moulded	Std

RTS = Rotary Tap Switch

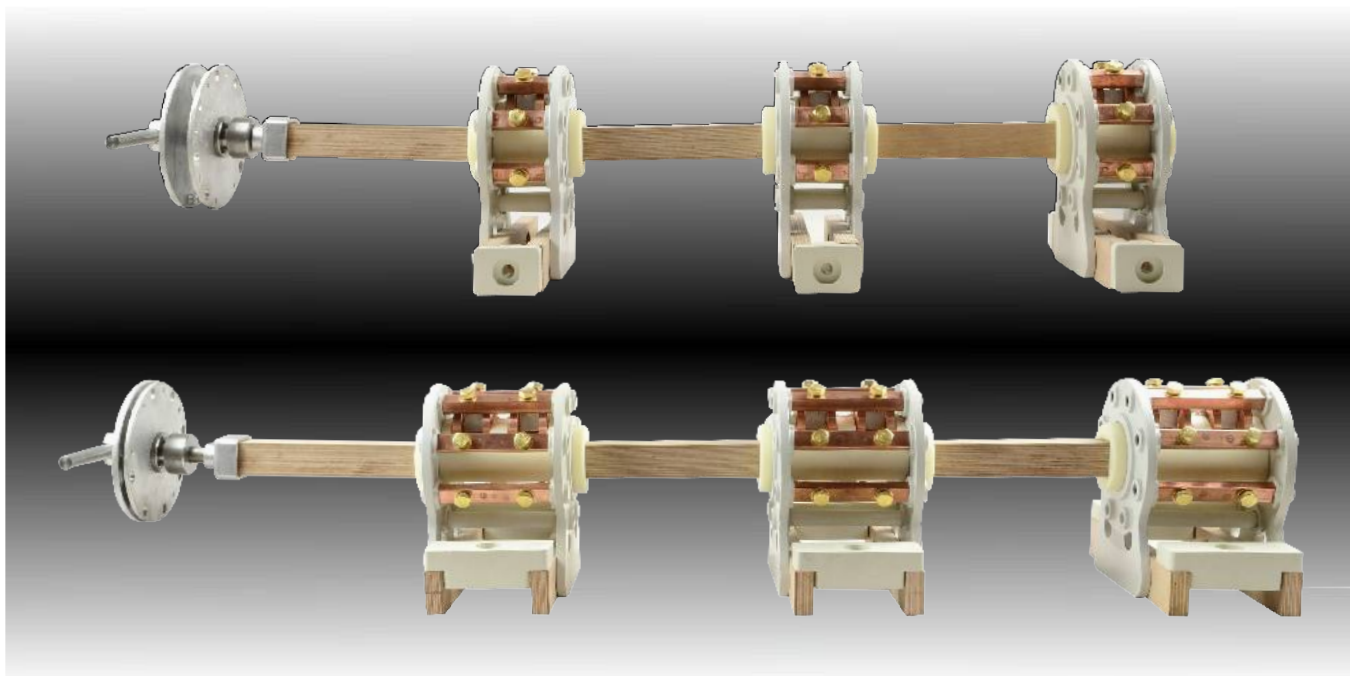
LTS = Linear Tap Switch

MB = Moulded Bracket

BC = Butterfly Contact

A = LEFT HAND

B = RIGHT HAND



PART NUMBER	DESCRIPTION	Kv	CURRENT	PHASE	TYPE	BRACKET	CONTACT
040-543	RTS 88Kv 315A 3Ph - Type AB	88	315	3	AB	Permali	T - Type
040-542	RTS 88Kv 630A 3Ph - Type AB	88	630	3	AB	Permali	T - Type

Linear Tap Switches



PART NUMBER	DESCRIPTION	Kv	CURRENT	PHASE	TYPE	BRACKET	CONTACT
040-526	LTS 22Kv 30A 2Ph 5Pos	22	30	2	N/A	Nylon	Linear
040-525	LTS 22Kv 30A 3Ph 5Pos	22	30	3	N/A	Nylon	Linear