

Enclosures

Hinges

Locks

Handles

Accessories

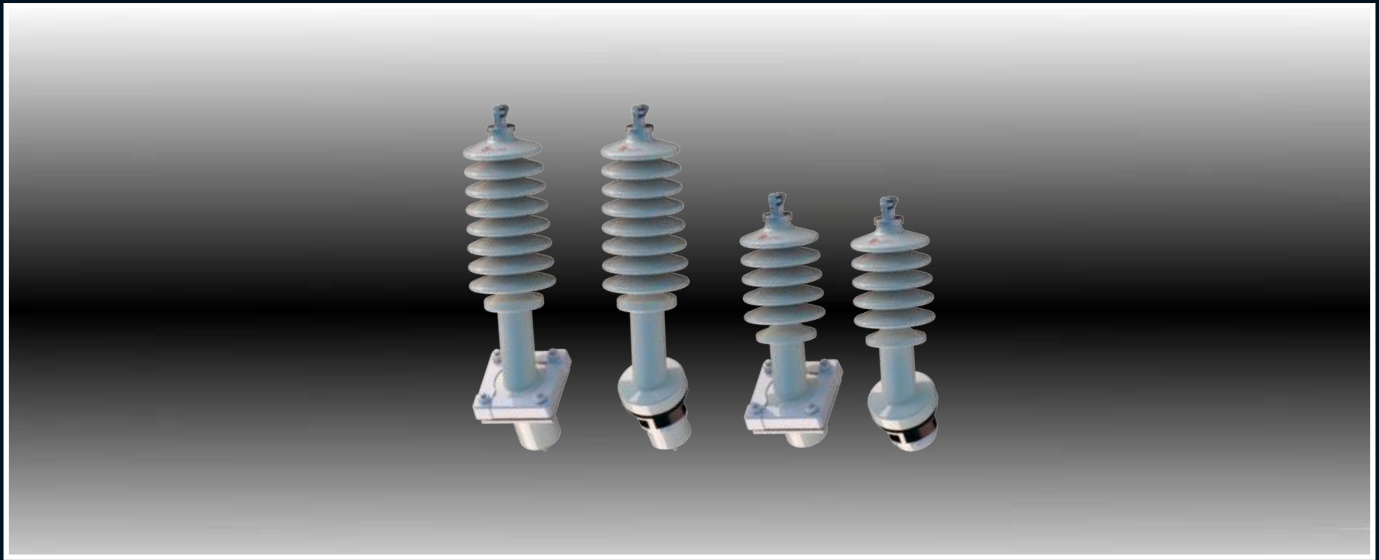
Rotary Operating Handles

Insulators

Transformer Equipment

Index

## Offset Bushings



PART NUMBER	DESCRIPTION	Kv RATING	CURRENT RATING	TANK HOLE SIZE	BIL	PF	CREEPAGE
040-395/X	AU 12K-30 Offset Bushing	12Kv	30A	70	75Kv	30Kv	>706
040-396/X	AU 12K-30 Offset Bushing	12Kv	30A	70	75Kv	30Kv	>660
040-397/X	AU 36K-30 Offset Bushing	24Kv	30A	70	125Kv	50Kv	>1036
040-398/X	AU 36K-30 Offset Bushing	24Kv	30A	70	125Kv	50Kv	>990

## Wildlife Guards

The Wildlife Guards are optimized for wildlife protection on over-head distribution systems rated 25Kv and less. These guards are designed to mount securely between the first and second shed (nearest the high voltage terminal) on primary bushings and arresters.



PART NUMBER	DESCRIPTION
WLG-140	Wildlife Guard Shed Mount - 136mm
WLG-230	Wildlife Guard Shed Mount - 116mm