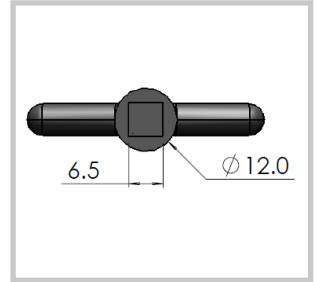
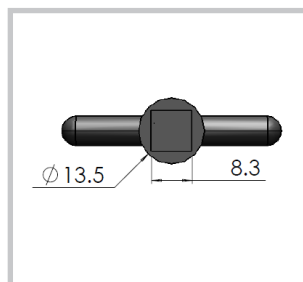


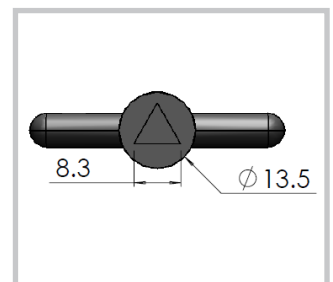
Part Number	Material and Finish	Description
6.1.12.1	ZDC Galvanized	T shaped key 57mm long to unlock all quarter turn series with a 6mm square drive



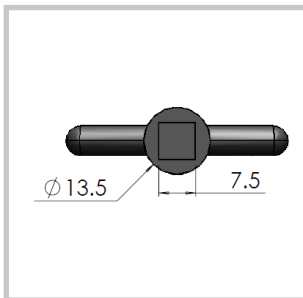
Part Number	Material and Finish	Description
6.1.12.2	Poly carbonate	T shaped key 57mm long to unlock all quarter turn series with a 6mm square drive



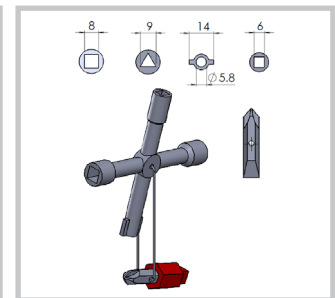
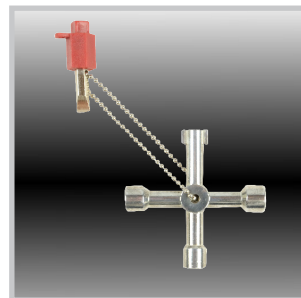
Part Number	Material and Finish	Description
8.2.135.1	ZDC Galvanized	T shaped key 57mm long to unlock all quarter turn series with a 8mm square drive



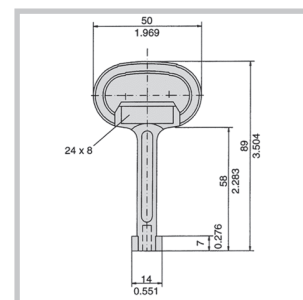
Part Number	Material and Finish	Description
8.3.135.1	ZDC Galvanized	T shaped key 57mm long to unlock all quarter turn series with a 8mm Triangular drive



Part Number	Material and Finish	Description
7.2.135.1	ZDC Galvanized	T shaped key 57mm long to unlock all quarter turn series with a 7mm square drive



Part Number	Description
6WAY5.135.1	ZDC 8mm & 6mm square, 8mm tri, double bit and screwdriver adaption



Part Number	Material and Finish	Description
4.1.135.1	ZDC Galvanized	Double bit key