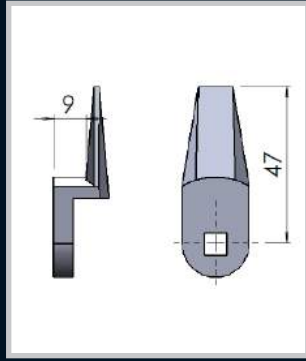
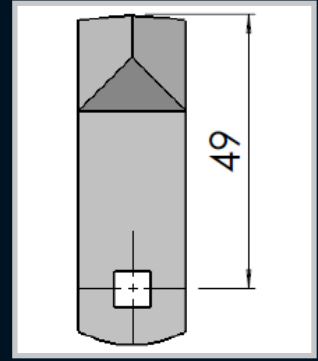


Enclosures



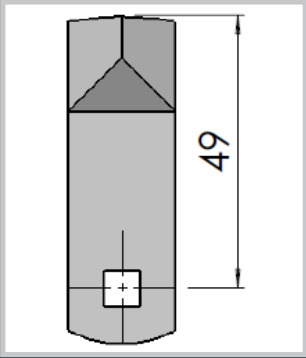
Part Number	Material and Finish	Description
CAM05Z	ZDC Galvanized	Cam with a 9mm step to suit series 16

Hinges



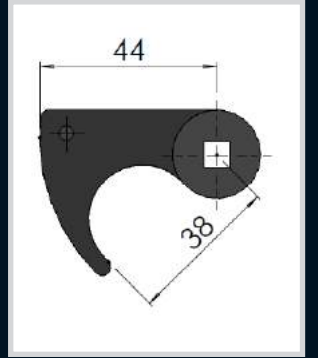
Part Number	Material and Finish	Description
CAM06M/S	Mild steel natural finish	Cam to suit handle 1011108

Locks



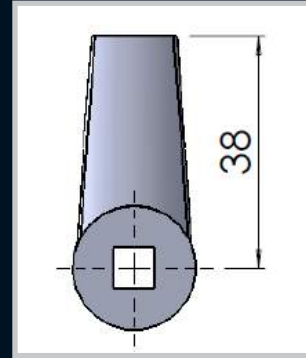
Part Number	Material and Finish	Description
CAM06S/S	Stainless steel natural finish	Cam to suit handle 1011108

Handles



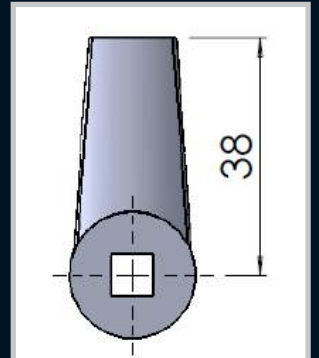
Part Number	Material and Finish	Description
CAM07N	Nylon black	Hooked cam to suit 16 series

Accessories



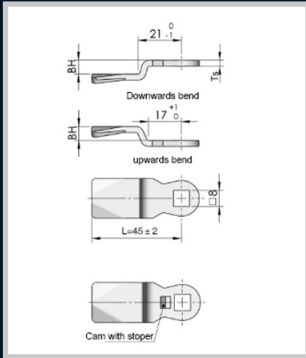
Part Number	Material and Finish	Description
CAM09N	Nylon black	Cam to suit 16 series

Rotary Operating Handles



Part Number	Material and Finish	Description
CAM09Z	ZDC Galvanized	cam to suit 16 series

Insulators



Transformer Equipment

Index

Part Number	Material and Finish	Description
CAM08/4	Mild steel	4mm bend
CAM08/12	Mild steel	12mm bend

**Remarks:**  
All other BH dimensions available on request.