



H	W	D	Part Number	Description	QTY
85	130	70	040-609	PSO-1 (S15)	24
85	130	70	040-662	PSO-1/A with single socket outlet	24



H	W	D	Part Number	Description	QTY
85	130	70	040-609/ISO	PSO-1/ ISO with 60 Amp Isolator	24

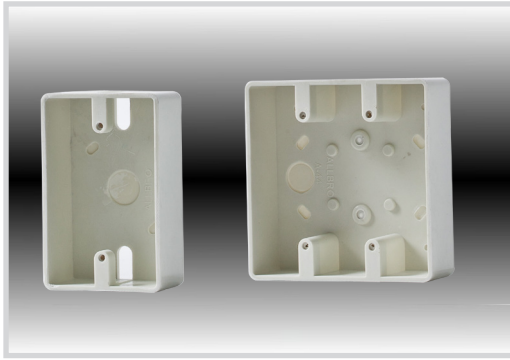


H	W	D	Part Number	Description	QTY
130	173	88	040-754	S15- Duo Empty Double socket outlet	12
130	173	88	040-770	S15/A- Duo with Double socket outlet	12

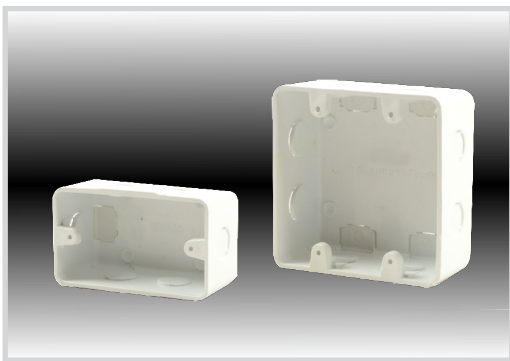


H	W	D	Part Number	Description	QTY
130	173	88	040-610	PSO-2 (F010)	12
130	173	88	040-663	PSO-2/A with double socket outlet	12

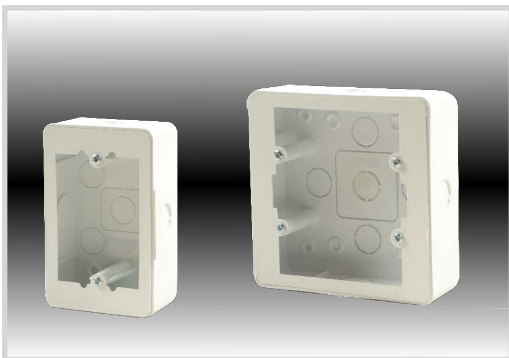
Socket Outlet Boxes and Surface Extension Boxes



H	W	D	Part Number	Description	QTY
118	70	36	040-723	A-42 Single surface mount socket outlet box (DMC version)	20
118	118	36	040-724	A-44 Double surface mount socket outlet box (DMC version)	20



Part Number	Description	H	W	D	QTY
040-788	PVC 4x2 Wall Box	62	107	51	10
040-789	PVC 4x4 Wall Box	109	108	51	10



Part Number	Description	H	W	D	QTY
040-790	PVC 4x2 Extension Box	127	81	42	10
040-791	PVC 4x4 Extension Box	127	127	42	10



Part Number	Description	H	W	D	QTY
040-633	DMC ST - 1 box (S64)	149	109	55	40