

Used by Industry for:

- Junction Boxes
- Instrumentation Panels
- Drive Enclosures
- Starter Boxes
- Control Systems etc.

Used by Utility Companies for:

- Distribution Boxes (Wall or Pole Mount)
- Meter Boxes
- Fibre Patch panels

Features:

- GRP Material
- Lockable Stainless Steel
- IP 65 rating

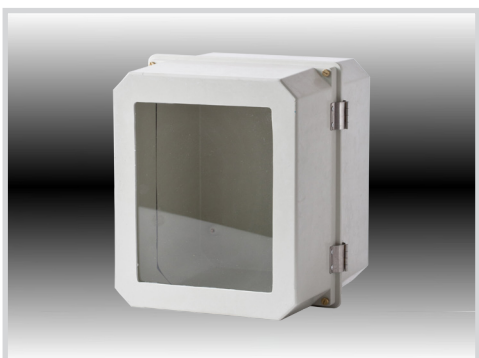


Part Number	Description	H	W	D	Description	QTY
040-727	RL-1P	150	150	100	Plain (Screw fastened Lid)	20
040-726	RL-1HW/L	150	150	100	Hinged with window	20
040-725	RL-1HP	150	150	100	Hinged plain box	20



Part Number	Description	H	W	D	Description	QTY
040-730	RL-2P	200	145	100	Plain (Screw Fastened Lid)	4
040-728	RL-2HP	200	145	100	Hinged plain box	4
040-729	RL-2HW	200	145	100	Hinged with window	4
040-766	RL-2CP	200	145	165	Plain (Screw Fastened Lid)	4
040-764	RL-2CHP	200	145	165	Hinged plain box	4
040-765	RL-2CHW	200	145	165	Hinged with window	4

Note: C = Deep Base, Shallow Lid



Part Number	Description	H	W	D	Description	QTY
040-769	RL-3P	260	220	230	Plain (Screw fastened Lid)	3
040-767	RL-3HP	260	220	230	Hinged plain box	3
040-768	RL-3HW	260	220	230	Hinged with window	3



Part Number	Description	H	W	D	Description	QTY
040-733	RL-4P	350	250	160	Plain (Screw fastened Lid)	2
040-731/L	RL-HP	350	250	160	Hinged plain with latch	2
040-732/L	RL-4HW	350	250	160	Hinged window with latch	2
040-734	RL-4DHP	350	250	200	Hinged Deep plain box	4
040-735	RL-4DHW	350	250	200	Hinged with window Deep	4

Note: Special wired pole mounted enclosures available on request.



Part Number	Description	H	W	D	Description	QTY
040-738	RL-5P	390	300	200	Plain (Screw fastened Lid)	3
040-736/L	RL-5HP	390	300	200	Hinged plain with latch	3
040-737/L	RL-5HW	390	300	200	Hinged window with latch	3
040-741	RL-5BP	390	300	141	Plain (Screw fastened Lid)	3
040-739	RL-5BHP	390	300	141	Hinged plain box	3
040-740	RL-5BHW	390	300	141	Hinged with window	3

Note: B = Shallow Lid
 Orange colour available on request - used here for illustration only.
 Standard colour is GREY.



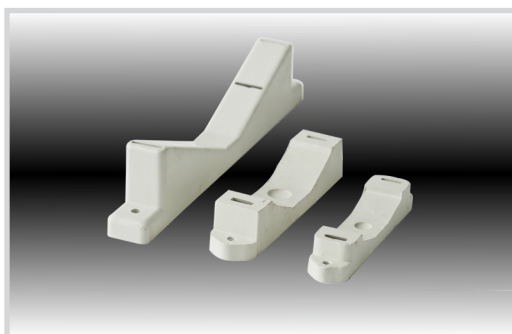
Part Number	Description	H	W	D	Description	QTY
040-640	RL-6D-P	480	315	200	Hinged plain box deep	1



Part Number	Description	H	W	D	QTY
040-631	AP2-A (DB-1 Shallow)	600	450	165	1



Part Number	Description	H	W	D	QTY
040-632	AP3-A (DB-1 Deep)	600	450	260	1
040-675	AP3-S (DB-1T Box - Thin)	600	450	75	1



Part Number	Description	H	W	D
020-293	PB-small B-A	27	124	22
020-292	PB-medium B-B	31	147	30
020-291	PB-large B-C	27	250	55
020-081	DMC DEVICE PLATE RL2 (DEV-D)	195	40	3
020-082	DMC DEVICE PLATE RL1 (DEV-C)	145	145	3
020-083	DMC DEVICE PLATE RL3A (DEV-G)	255	215	3
020-084	DMC DEVICE PLATE RL3 (DEV-H)	255	215	3
020-085	DMC DEVICE PLATE RL4 (DEV-O)	345	240	3
020-086	DMC DEVICE PLATE RL5 (DEV-Q)	385	295	3