

Enclosures

<b>MATERIAL</b>	DMC (Dough Moulding Compound)			
<b>OPERATING TEMPERATURE</b>	+200°C on DMC lids and +110°C on Polycarbonate Lids			
<b>GLOW WIRE CAPABILITY / FLAMMABILITY</b>	960° / UL94 V0			
<b>EXPECTED UV LIFE (DIRECT EXPOSURE)</b>	25 years +			
<b>IP LEVEL</b>	IP54			
<b>SECURITY LEVEL</b>	1	2	3	4
<b>ENVIRONMENT (INDOOR/OUTDOOR)</b>	Indoor and Outdoor use			

Hinges

Locks

Handles



Accessories

Dimensions			Base	Lid	7035 RAL Base		Orange Base		Qty Per Box	Device Plate (Sold Separately)	
H	W	D	D	D	Grey Lid	Clear Lid	Orange Lid	Clear Lid		SMC Version	Powder Coated Mild Steel
					IP 68	IP 68	IP 68	IP 68			
186	151	132	90	50	OK0-G	OK0-GC	OK0-O	OK0-OC	4	OKM-0	OKM-0M
260	165	160	135	45	OK1-G	OK1-GC	OK1-O	OK1-OC	4	OKM-1	OKM-1M
260	260	160	137	48	OK2-G	OK2-GC	OK2-O	OK2-OC	2	OKM-2	OKM-2M
340	260	160	135	50	OK3-G	OK3-GC	OK3-O	OK3-OC	2	OKM-3	OKM-3M
530	340	160	135	45	OK4-G	OK4-GC	OK4-O	OK4-OC	1	OKM-4	OKM-4M

Rotary Operating Handles

Insulators



Transformer Equipment



Index

Part Number	Description
OKPH-G	DMC Hinge Set -Grey
OKPH-O	DMC Hinge Set -Orange
OKM-MS	Stainless Steel Mounting Brackets
OK-BP	Blind Plug
OK-G/SCREWS	Cover Sealing Screws
OKARI-HAND	Handle
OKI-INT	Interconnector



Weather & UV Resistant  
(20 Year outdoor life)



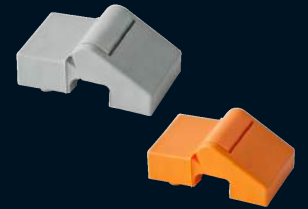
Halogen Free



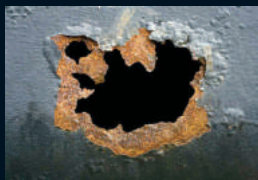
External mounting  
system ensures  
IP level is not  
compromised



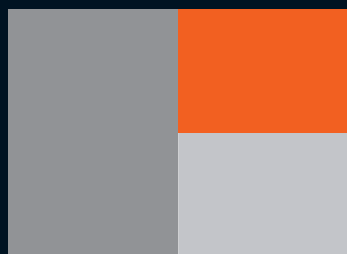
Flame Retardant



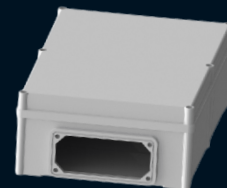
External Hinges can  
be added



Durable GRP Material



Can be  
Colour Impregnated



Multiple boxes can be joined  
using "INT" Interconnectors